



HOST / REMOTE UTILITY

**Automated Accounting
Systems, Inc.
PO Box 436
Livingston, AL 35470**

The Procurement People

Phone: 800-237-0252



**Innovative
Software
Solutions
for the
Forest Products
Industry**

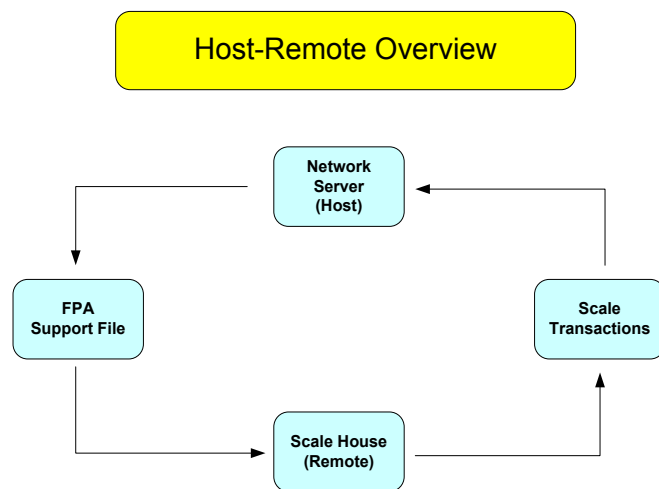
Overview

The **Host/Remote Utility** allows you to operate a scale house as a stand alone unit. When operated in this manner, files and transactions are periodically transferred between the host and remote locations. One of the advantages of this method is that the remote scale is operated independently of the network server.

Support files (tracts, destinations, producers, owners, inventories, etc.) are maintained at the host location. The support files are periodically transferred from the host location to the remote location. The remote scale operator only has access to weighing functions. If necessary, settlements and checks can be written at the remote scale location by accessing the network server.

Scale ticket transactions are captured and stored at the remote locations. They are periodically transferred from the remote location to the host location. The number of days that the system retains the scale ticket transactions at the remote location is user-defined.

The support files and scale ticket transactions can be transferred with one of the following products: pcAnywhere, GoToMyPC, and Log Me In Pro. If a





FPA

Forest Products Accounting

HOST/REMOTE UTILITY

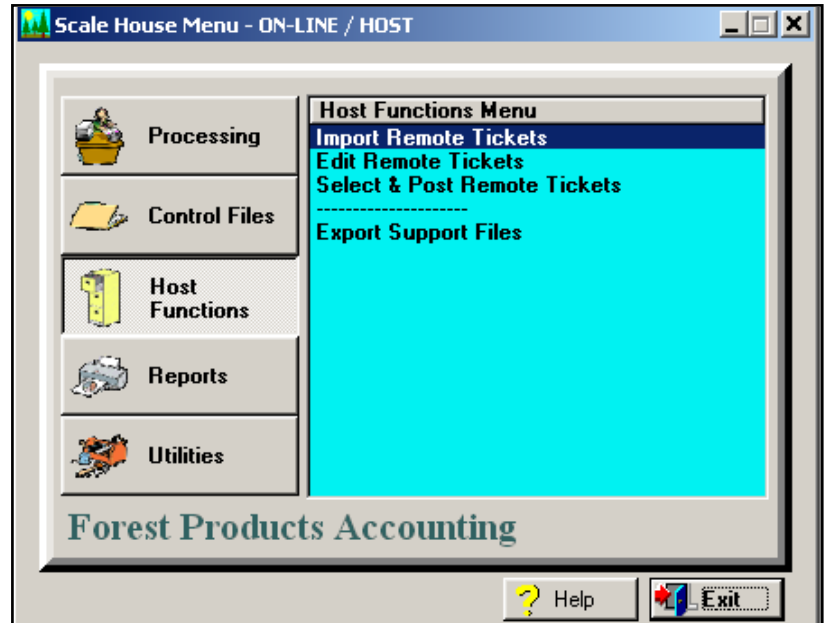
Scale House—Host Functions

The System Controls General Information window contains the parameters that controls whether the scale is on-line, a host, or remote location.

When the system is setup as a host location, the menu window shown on the right is displayed.

The host location can export support files (tracts, producers, owners, destinations, inventories, etc.) to the remote location.

The host location can import remote location scale ticket transactions, edit those transactions, and post the transactions based on the date, time, destination, and tract.



Scale House—Remote Functions

When the system is setup as a remote location, the menu window shown on the right is displayed.

The remote location can import support files (tracts, producers, owners, destinations, inventories, etc.) from the host location.

The remote location can export scale ticket transactions to the host location based on the date, time, destination, and tracts.

In cases where there is problem in the export of the scale ticket transactions, the system allows you to re-open the tickets for another export.

The number of days that the system retains the scale ticket transactions at the remote location is user-defined.



“The Procurement People”